

Great Streets

5/20/15

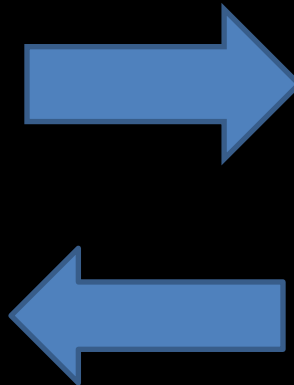
What is a Great Street?

- Accommodates **all road users**, regardless of age, ability, or mode of transportation
- Have positive impacts on public health, economic development, roadway safety, and traffic congestion
- Contribute to neighborhoods
- Be highly interconnected
- Be unique and promote community pride

Exchange of Ideas

Engineering / Public Works

- Technical Design
- Maintenance
- Stormwater
- Utilities



Planning

- Design Standards
- Public Outreach
- Community Health
- Economic Sustainability

El Paso Experience

- Street Tree Ordinance – 2011
- New Comprehensive Plan “Plan El Paso” – 2012
- Transportation Planning Program created – 2012
- Street Capital Improvement Program adopted – 2012

- New Street Design Standards – 2013 (CIP Projects)
- Interim Bicycle Map – 2013 (CIP Project)
- New Median Design Standards – 2014 (CIP Projects)
- New Tree and Plan List for Streets – 2014 (CIP Projects)

El Paso Experience

- Bicycle Advisory Committee created – 2014
- Great Streets Plan – 2015
- Bicycle Plan – 2015

- Tree Farm to provide inventory of trees for Street CIP projects, medians, parks, and other quality of life projects
- 1,044 trees planted in CIP Projects for 2015 YTD, including 323 trees in Downtown
- 752 trees harvested at the Tree Farm and ready for planting



4 ft

3 ft

8 ft

10 ft

10 ft

3 ft

4 ft

8 ft

Neighborhood Avenue



Neighborhood Avenue



Neighborhood Avenue



Neighborhood Avenue





SPEED HUMP

11036







GLENHARTY

PODS
Moving & Storage





ALMAYCIE 9500



High Ridge
Franklin Hills







STREET SIGN





Blanchard

ONE WAY







CITY OF EL PASO TEXAS
MAGOFFIN PARK
 MAYOR OSCAR LEESEER
 CITY REPRESENTATIVES

ANN MORGAN LILLY DISTRICT 1	DR. MICHAEL EDDIE HOLGREN DISTRICT 2
LARRY E. ROMERO DISTRICT 3	LILLY DISTRICT 4
EMMA ACOSTA DISTRICT 5	CORTNEY N. DISTRICT 6
CARL L. ROBINSON DISTRICT 7	CITY MANAGER JOYCE A. WILSON

SPECIAL THANKS TO: JAMES BYRLE, P.E., LEOP SALGALIK, JOHN OSTED, R.
 ARCHITECTURE INC. HOUSTON TEXAS GENERAL CONTRACTOR



SANTA FE ST.

SCALE: 1" = 30'



LEGEND	
	63 STREET TREES
	27 PEDESTRIAN LIGHTING
	9 IRON ADJUSTABLE TREE WELLS
	2 BENCHES
	2 TRASH RECEPTACLES
	20 SHRUBS
	1220 sq. ft. OF LANDSCAPED PARKWAY
	7000 sq. ft. OF TREATED CONCRETE CROSSWALK
	5320 sq. ft. OF CONCRETE SIDEWALK

Active City Year
September 15, 2012
January 6, 2013
EL PASO MUSEUM OF ART
TERRY AND RAFFA WOODS GALLERY
1000 W. BRIDGEMAN BLVD.



WestStar Bank

EL PASO CONVENTION AND PERFORMING ARTS CENTER

DAVE KOZ AND FRIENDS
Dec. 13
Plaza Theatre

WestStar Bank

EL PASO CONVENTION AND PERFORMING ARTS CENTER
ONE CIVIC CENTER PLAZA

ONLY









200 West 100 West
San Antonio

P
↑
ARKING

X LC
010078



ROAD CLOSED
RIGHT LANE CLOSED

KEEP RIGHT

PUSH BUTTON FOR

B





City's One Landscape Standard





CAMINO REAL HOTEL

EL PASO MUSEUM OF ART

El Paso

Main



CASINO REAL HOTEL

BIKES



CASINO REAL HOTEL

City District

STATE



CHASE





on
ers

AVENUE
33-4955

ARTISAN
HOTEL

ONE
WAY
←

400 FRANKLIN 300

ONE
WAY
←

AVAILABLE
Sergio Tinajero
915-233-2343
LHMAN
FOURTE

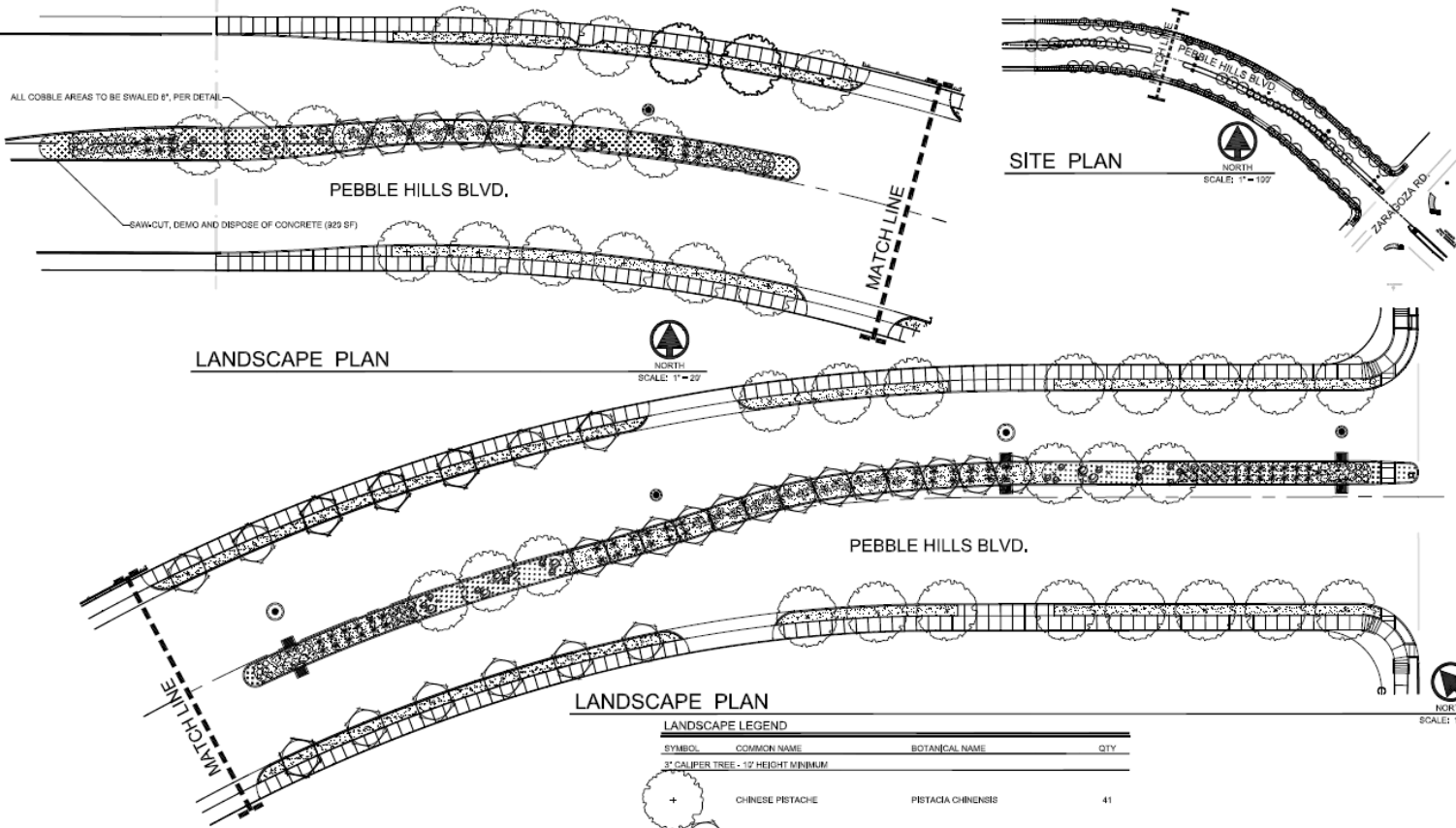












LANDSCAPE PLAN
SCALE: 1" = 20'

SITE PLAN
SCALE: 1" = 100'

LANDSCAPE PLAN
SCALE: 1" = 20'

LANDSCAPE LEGEND

SYMBOL	COMMON NAME	BOTANICAL NAME	QTY
3" CALIPER TREE - 12' HEIGHT MINIMUM			
+	CHINESE PISTACHE	PISTACIA CHINENSIS	41
•	SEEDLESS DESERT WILLOW	CHLOPSIS LINEARIS 'ART'S SEEDLESS'	31
6 GALLON SHRUB - 18" HEIGHT MINIMUM UNLESS OTHERWISE INDICATED			
✱	YELLOW BELLS	HEPERALOE PARVIFLORA	39
✱	RED YUCCA	HEPERALOE PARVIFLORA	25
✱	REDOLENS ACACIA	ACAÇIA REDOLENS	31
⊕	CHIHUAHUIAN RAIN SAGE	LEUCOPHYLLUM LAEVIQATUM	16
1 GALLON SHRUB - GROUND COVER			
⊙	PURPLE LANTANA	LANTANA MONTEVIDEINSE	38
○	SUN GOLD GAZANIA	GAZANIA RISENS 'SUN GOLD'	24
GRAVELS			
▨	3/4" FRANKLIN RED ROCK, 3" DEPTH & NONWOVEN WEED BARRIER FABRIC, SEE ROCK/SCREENING DETAIL.		
▨	COBBLESTONE BLEND - 20% #1, 80% 2"-4", 22% PEA GRAVEL, 3" DEPTH & NONWOVEN WEED BARRIER FABRIC, SEE ROCK/SCREENING DETAIL.		
GRAVELS			
⊙	FRANKLIN RED BOULDER • 2X2 AND 3X3 • HALF BURIED PER DETAIL.		26/13

LANDSCAPE NOTES

- ALL UTILITY EASEMENTS SHALL BE MARKED PRIOR TO EXCAVATION, AND PARTICULAR ATTENTION PAID TO TREE PLACEMENT WITHIN AND THROUGHOUT SITE.
- THERE SHALL BE NO STEEL EDGING BETWEEN ROCK TYPES.
- CONTRACTOR SHALL PROVIDE ROCK SAMPLES AND OBTAIN APPROVAL FROM OWNER PRIOR TO FINAL DELIVERY OF QUARRIED MATERIALS.
- CONTRACTOR TO PAY CLOSE ATTENTION TO FINISH GRADES, SHOULD GRAVELED AREAS EXCEED 4:1 SLOPE, CONTRACTOR TO OBTAIN APPROVAL OF LANDSCAPE DESIGNER PRIOR TO MULCH INSTALLATION.
- ALL TREES SHALL BE SINGLE LEADER TRUNK, UNLESS INDICATED IN PLANS.



FILE No. 238444

NO.	DATE	REVISION	REMOVED BY

IRREGATOR'S NOTE: THIS PLAN WAS SUBMITTED BY MCSI MORENO CARDENAS INC. ON 06/15/2017. THE DESIGNER HAS REVIEWED THIS PLAN AND APPROVES IT FOR CONSTRUCTION. ANY CHANGES TO THIS PLAN MUST BE APPROVED BY THE DESIGNER. SEE THE CONTRACT FOR MORE INFORMATION.

SCALE: 1" = 100'

PROJECT NAME: PEBBLE HILLS BOULEVARD STREET & DRAINAGE IMPROVEMENTS

ENGINEERING and Construction Management

218 N. CAMPBELL ST. PH. (915) 212-0855

SHEET TITLE: LANDSCAPE PLAN

SHEET: 1 OF 3

MCSI Moreno Cardenas Inc.
Landscape Architecture & Engineering
2100 E. Main Street, Suite 200
San Antonio, TX 78204
PH: (214) 343-1111

PLANT LEGEND

TREES BOTANICAL NAME / COMMON NAME

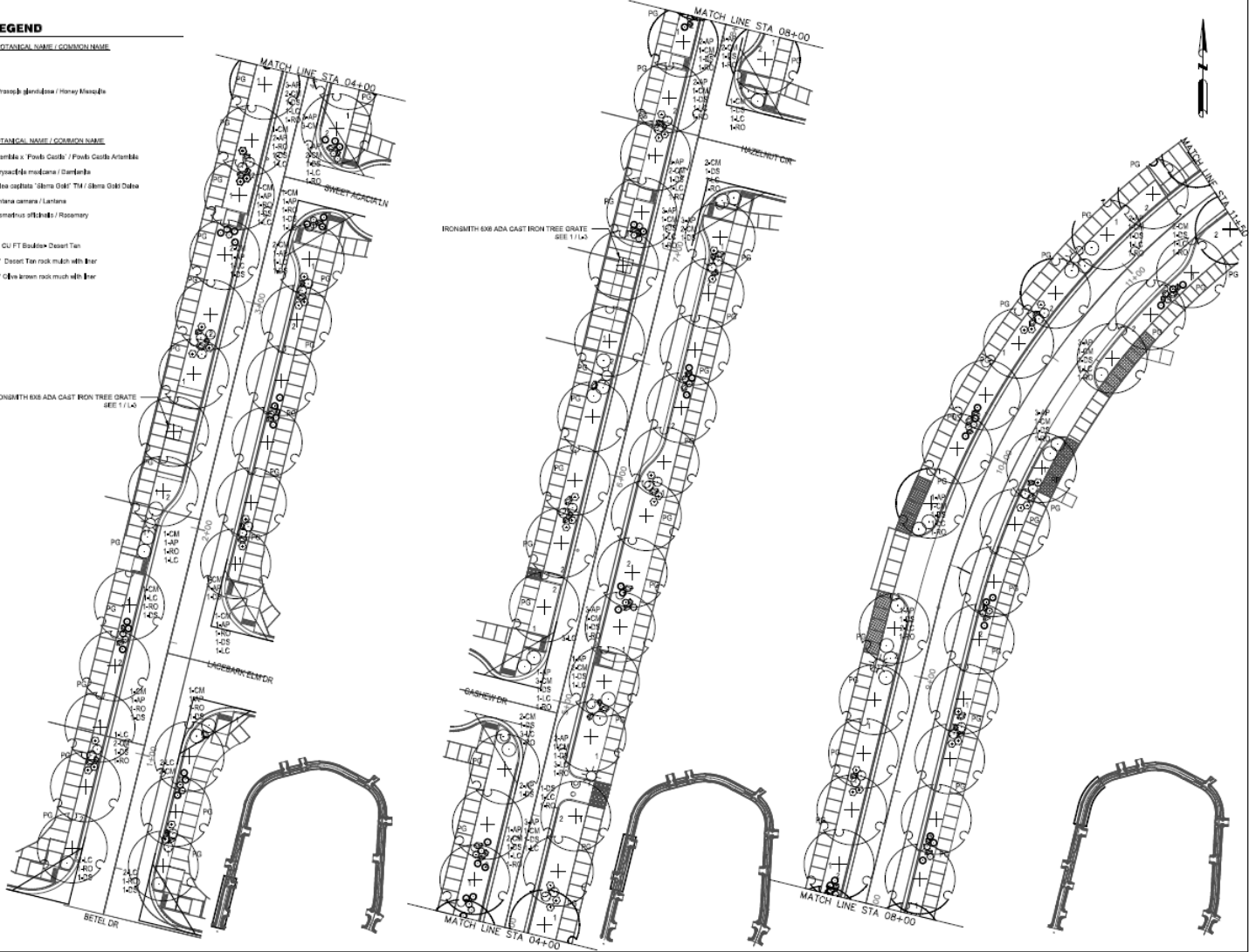


SHRUBS BOTANICAL NAME / COMMON NAME

- Artemisia / Foothills Castle / Foothills Castle Artemisia
- Chrysothamnus / Golden Cholla
- Dalea confertiflora / Sierra Gold TM / Sierra Gold Dalea
- Lantana camara / Lantana
- Rosmarinus officinalis / Rosemary

- 64" CU FT Boulder Desert Tan
- 3/4" Desert Tan rock mesh with liner
- 3/4" Olive rock mesh with liner

IRONSMITH 6X6 ADA CAST IRON TREE GRATE
SEE 11-A



PLANT DIRECT

Plan Scale 1" = 10'
Sheet Scale 1" = 10'

DATE	REVISION



DATE	SCALE

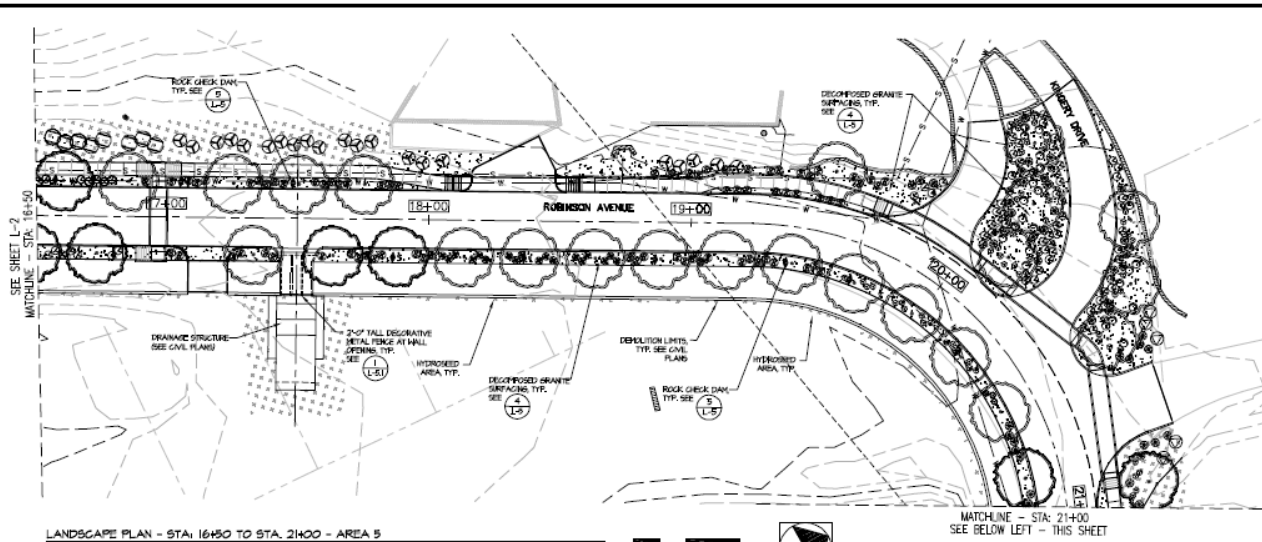
PROJECT NAME
**KERNEL CIRCLE
 STREET IMPROVEMENTS**

**CITY OF EL PASO
 ENGINEERING**

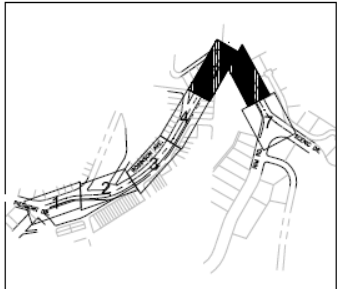
Wright & Dalbin
 A. B. C. E. L. C. S. - R. L. C.
 1111 Beckhorn St.
 El Paso, Texas 79902
 Tel: 915.533.0100
 Fax: 915.533.0101

SHEET TITLE
**LANDSCAPE
 PLAN
 SHEET 2 OF 5**

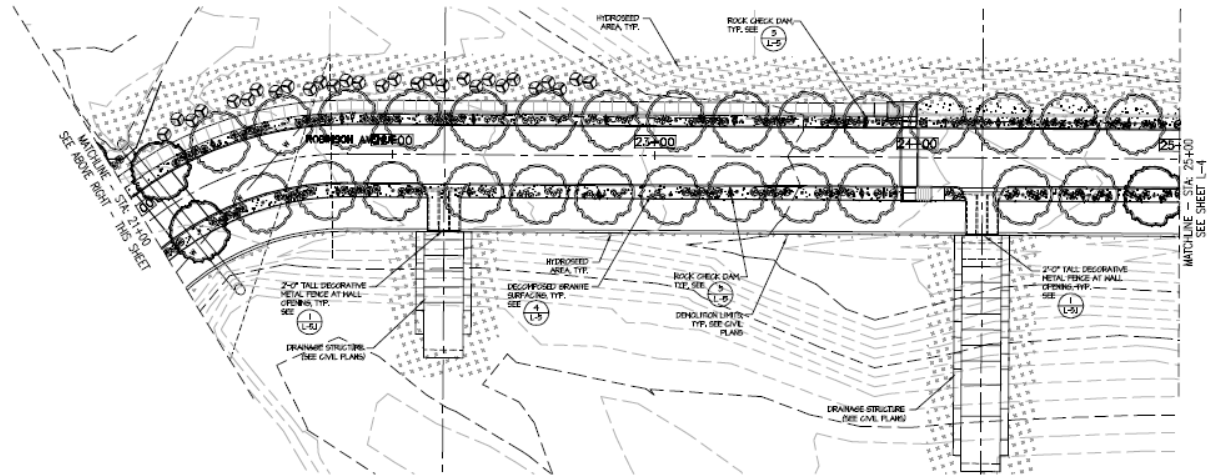
DATE
1.2.11



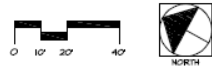
LANDSCAPE PLAN - STA: 16+50 TO STA: 21+00 - AREA 5
SCALE: 1" = 20'-0"



AREA KEYMAP
SCALE: N.T.S.



LANDSCAPE PLAN - STA: 21+00 TO STA: 25+00 - AREA 6
SCALE: 1" = 20'-0"



LANDSCAPE LEGEND		
SYMBOL	BOTANICAL NAME	COMMON NAME
TREES		
	PROTEUS GLANDULOSA	THORNLESS HONEY HEDGE
SHRUBS		
	ERIODERMIS HYDROPARVA	BLUE BELLS
	ERIODERMIS HUCULATA	VALENTE
	LARREA TRIDENTATA	CREOSOTE
	LEUCOPHYLLUM FRUTESCENS	GREEN GLAZED SAGE (GREEN FOLIAGE)
	SALVIA GREGGII	ROSEMARY SAGE (SILVER FOLIAGE)
	SALVIA GMELINOIDES	MEXICAN BLUE SAGE
GROUNDCOVERS		
	BERLANDIERIA LYRATA	ORNGULATE FLOWER
	LARREA TRIDENTATA	PURPLE TRAILING LANTANA
	LARREA X 'NH GOLD'	NH GOLD LANTANA
ACCENTS		
	MULDERRIA GAVALARIS	REGAL YET HOLDERMARIA
HYDROSED AREAS		
	AREAS TO RECEIVE HYDROSEEDING OF NATIVE SEED MIX, SEE LANDSCAPE SCHEDULE AND SPECIFICATIONS.	
IRRIGATING SURFACING		
	AREAS TO RECEIVE DECOMPOSED GRANITE ROCK MICH SURFACING, 3" MINUS GRADATION, COLOR TO MATCH EXISTING NATIVE ROCK. SEE SPECIFICATIONS.	
	AREAS TO RECEIVE RRP RAP SURFACING, 3" TO 1 1/2" SIZE, COLOR TO MATCH EXISTING NATIVE ROCK. SEE SPECIFICATIONS.	
	ROCK CREEK DAM	
NOTES		
SEE LANDSCAPE DETAILS AND SCHEDULE SHEET L-3.		

NO. DATE REVISION REMARKS BY

SCALE: 1" = 20'-0"

PROJECT NAME: ROBINSON AVENUE STREET AND DRAINAGE IMPROVEMENTS

City of El Paso
ENGINEERING
and Construction Management

218 N. CAMPBELL ST. PH. (915) 212-3065

SHEET TITLE: LANDSCAPE PLAN

SHEET: L-3

FILE No. 238488

McGann & Associates
Landscape Architects and Planners
601 North Loop West, Suite 700
Houston, Texas 77009
Telephone: (281) 481-1111 Fax: (281) 481-1110
State Board of Architecture/Engineers Registration No. 2112

LANDSCAPE ARCHITECT'S SEAL
I have prepared this plan and the information herein was obtained by me or under my direct supervision and I am a duly licensed professional landscape architect in the State of Texas. My registration number is 11111.

LANDSCAPE ARCHITECT'S NOTE
THE AREA SHOWN ON THIS PLAN WAS PREPARED BY ME OR UNDER MY DIRECT SUPERVISION AND I AM A DULY LICENSED PROFESSIONAL LANDSCAPE ARCHITECT IN THE STATE OF TEXAS. MY REGISTRATION NUMBER IS 11111.

LANDSCAPE ARCHITECT'S NAME: MCGANN & ASSOCIATES, L.P.

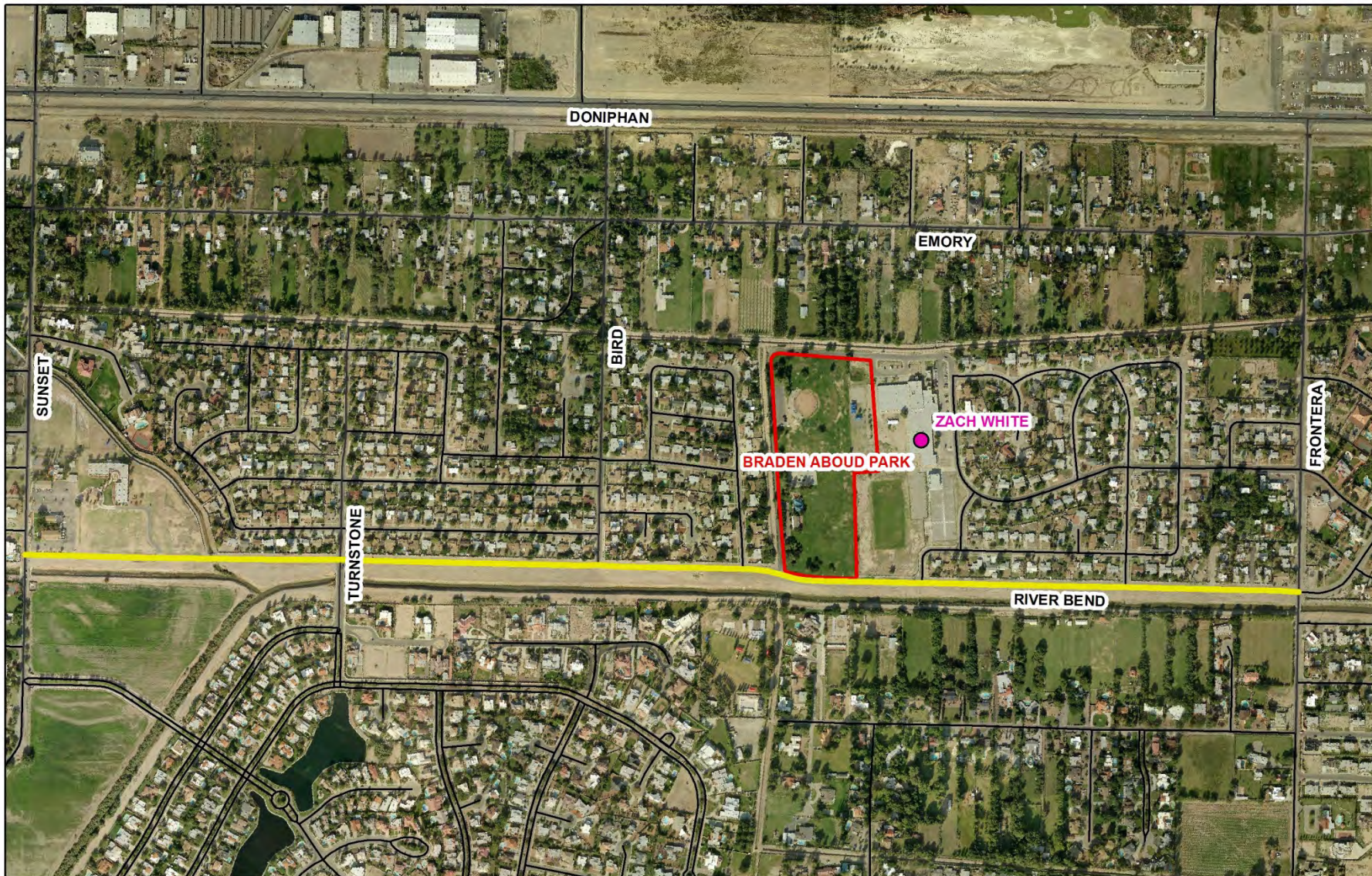












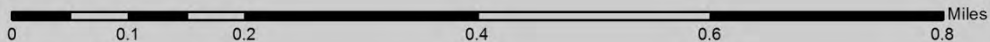
The features represented on this map are in the Texas State Plane Coordinate system, Central Zone, NAD 83, units feet, using the Lambert Conformal Conic projection.

This map was generated using ArcGIS by Transportation Planning for the City of El Paso, Texas.
 222 S. Campbell St.
 El Paso, Texas, 79901
 915.541.4680

This map is designed for illustrative purposes only. The features depicted here are approximate and more site-specific studies may be required to draw accurate conclusions. Enlargements of this map to scales greater than its original can induce errors and may lead to misinterpretations of the data. Transportation Planning makes no claim to its accuracy or completeness.



River Bend Drive Sunset Drive to Frontera Road



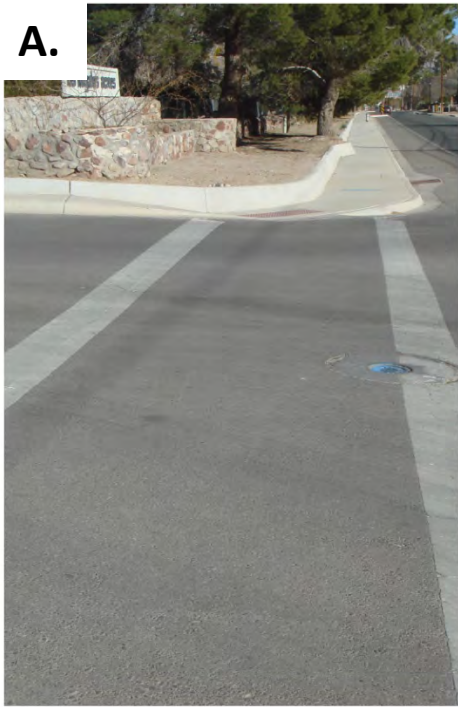


Looking Northwest from Frontera

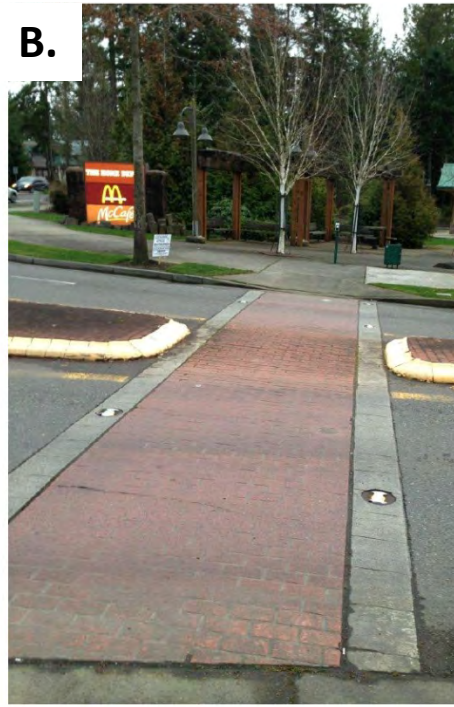


Looking Southeast from Braden Aboud Park

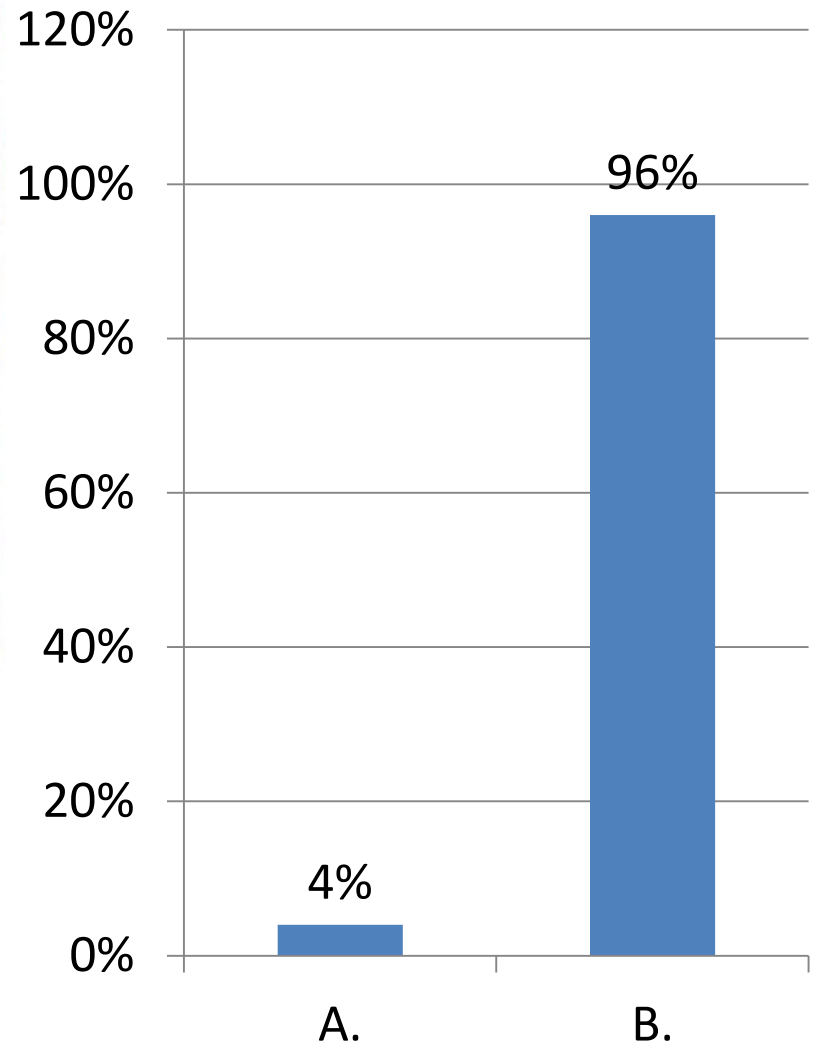
1. Select your preference for crosswalk design:



Painted



Textured



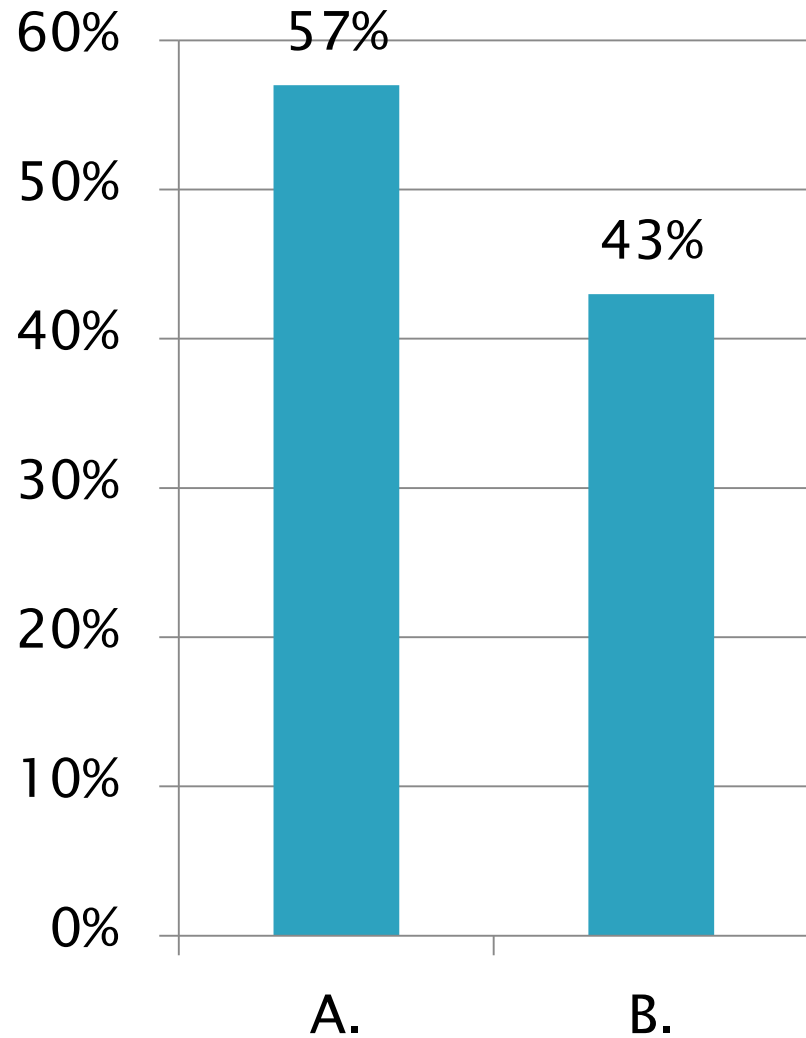
Traffic circle



3. Should a traffic circle be placed at the Turnstone and River Bend intersection?

A. Yes

B. No



Parallel Parking Lanes



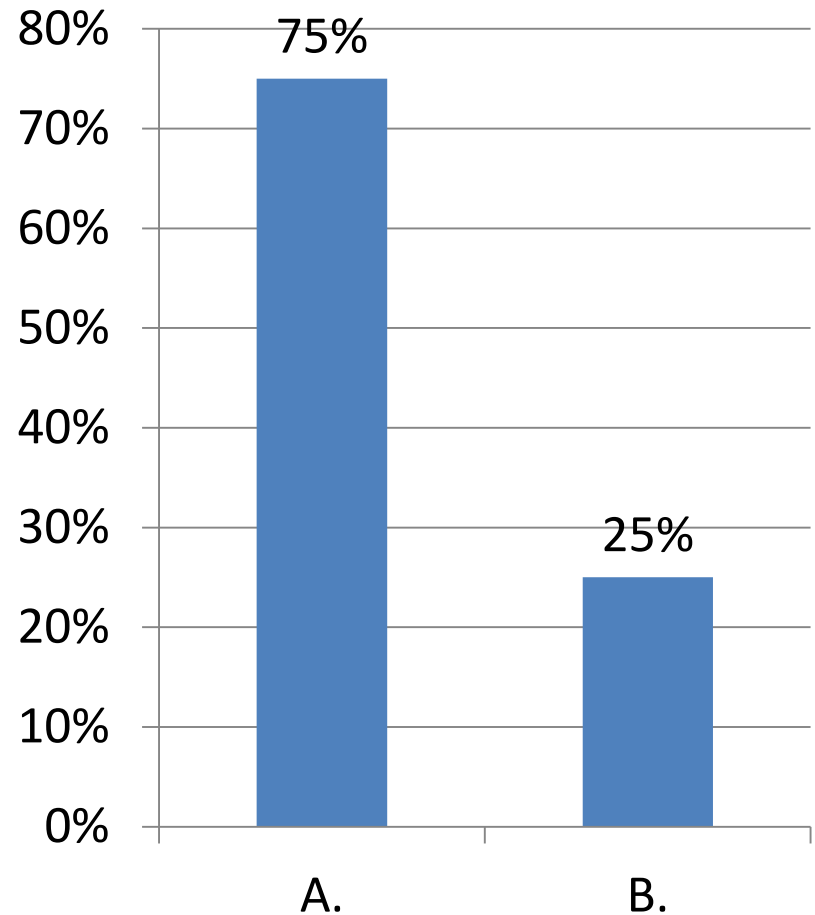
No Parking Lanes



4. Parallel parking should be included at Braden Aboud Park and Zach White Elementary School (easterly side of the roadway):

A. Yes

B. No



Shared-Use Path



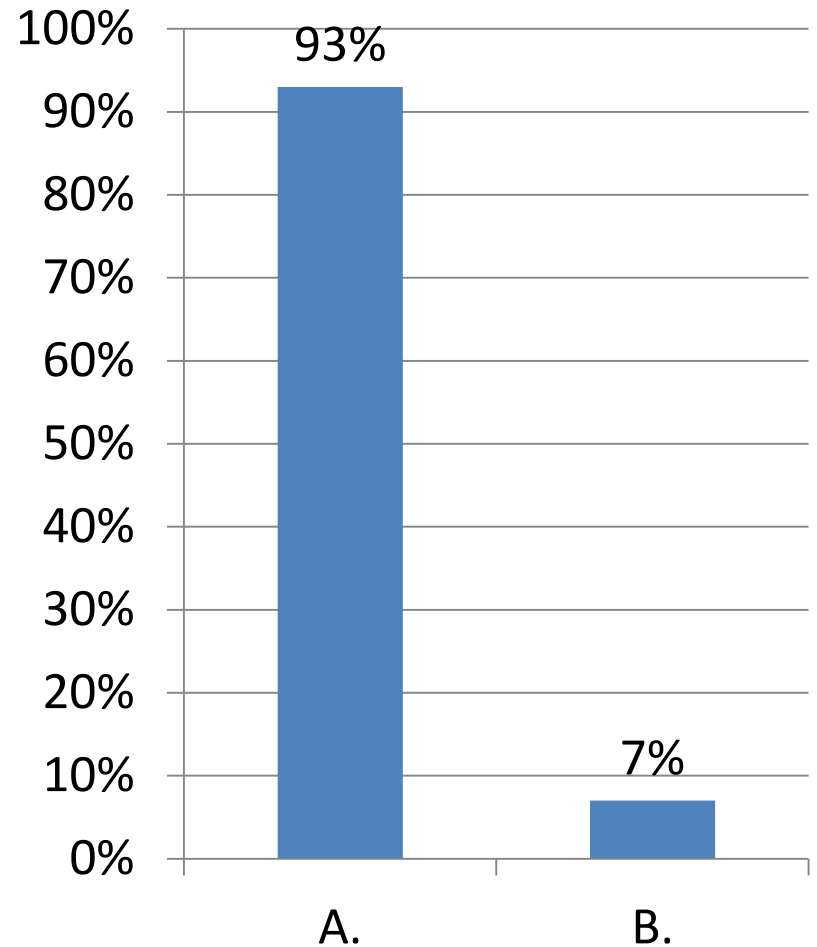
Sidewalk



5. What type of pedestrian amenities should be located along the easterly side of River Bend Drive?

A. Shared-Use Path

B. Sidewalk



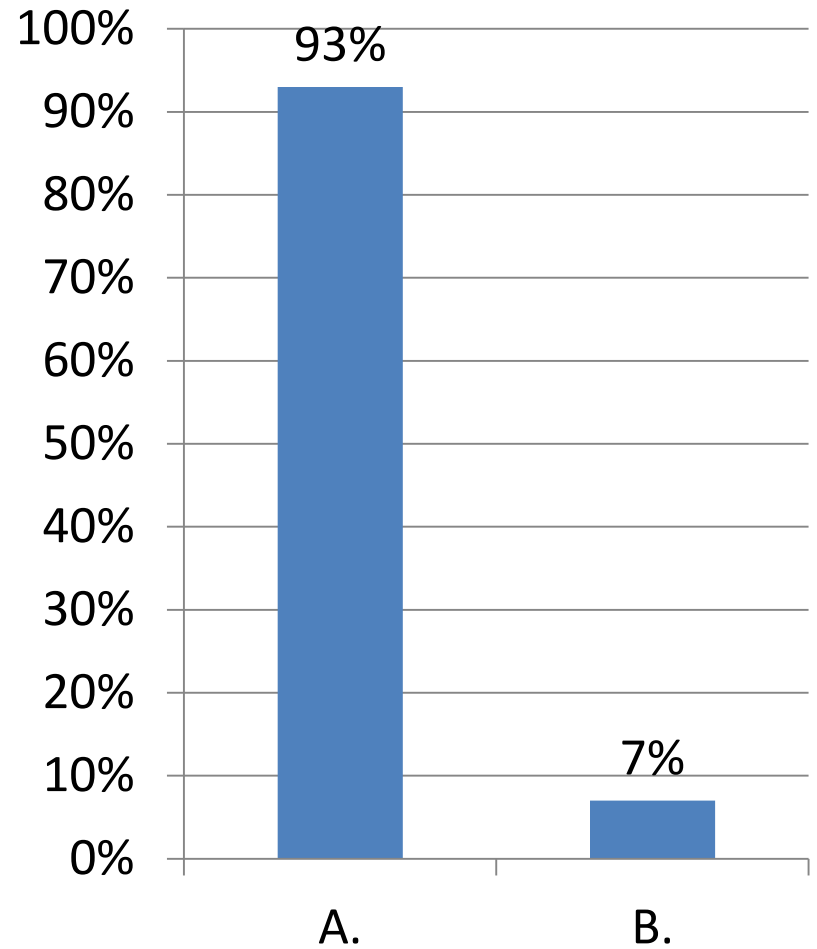
Street Trees



6. Should street trees be placed along the easterly side of River Bend Drive?

A. Yes

B. No



Landscaping



A. Formal Trees/Vegetation

Landscaping



B. Informal Trees/Vegetation

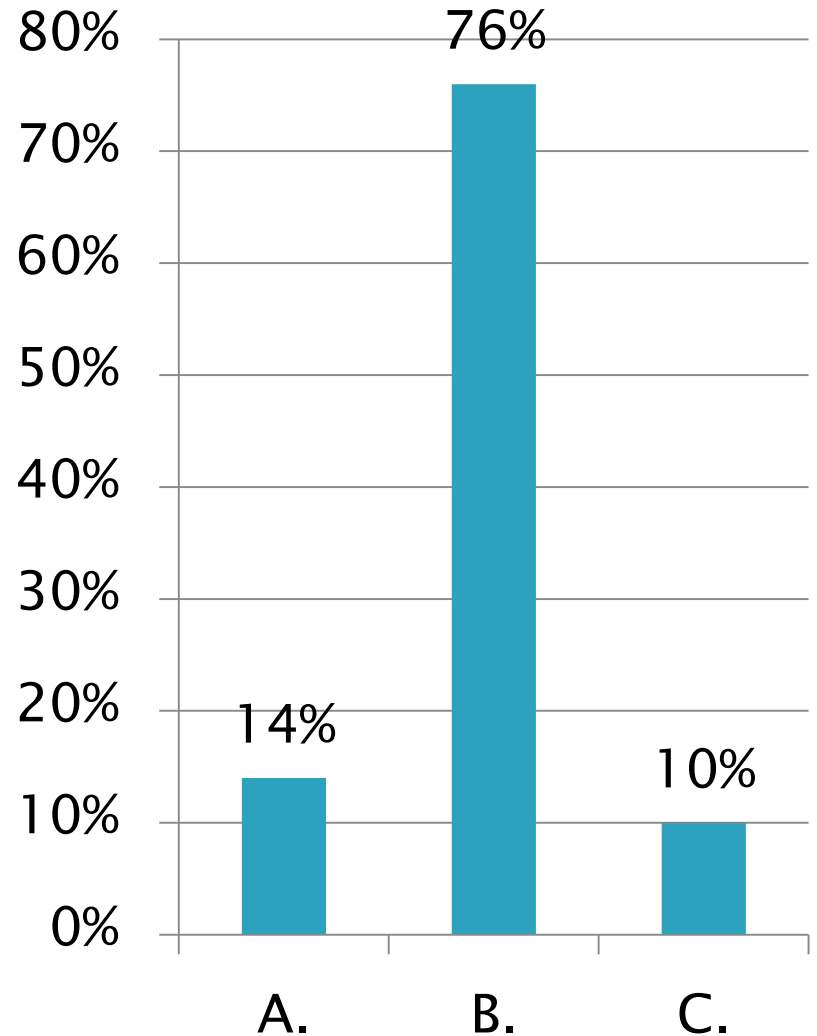
Landscaping



C. Desert Vegetation

7. Select landscaping type:

- A. Formal trees/vegetation
- B. Informal trees/vegetation
- C. Desert vegetation




BIKE LANE







ENERGY STAR
ENERGY EFFICIENT
EP

McDonald's



30



The features represented on this map are in the Texas State Plane Coordinate system, Central Zone, NAD 83, units feet, using the Lambert Conformal Conic projection.

This map was generated using ArcGIS by Transportation Planning for the City of El Paso, Texas
 801 Texas Ave.
 El Paso, Texas, 79901
 915.212.0083

This map is designed for illustrative purposes only. The features depicted here are approximate and more site-specific studies may be required to draw accurate conclusions. Enlargements of this map to scales greater than its original can induce errors and may lead to misinterpretations of the data. Transportation Planning makes no claim to its accuracy or completeness.



Transportation Alternatives Program

Resler Drive Existing Area Bicycle Facilities



Transportation Planning
 Moving El Pasoans Toward The Future

