

Infrastructure Builds
Community
Community Improves
Infrastructure

Highland Vista Neighborhood

A case study in midtown
Tucson, Arizona, USA

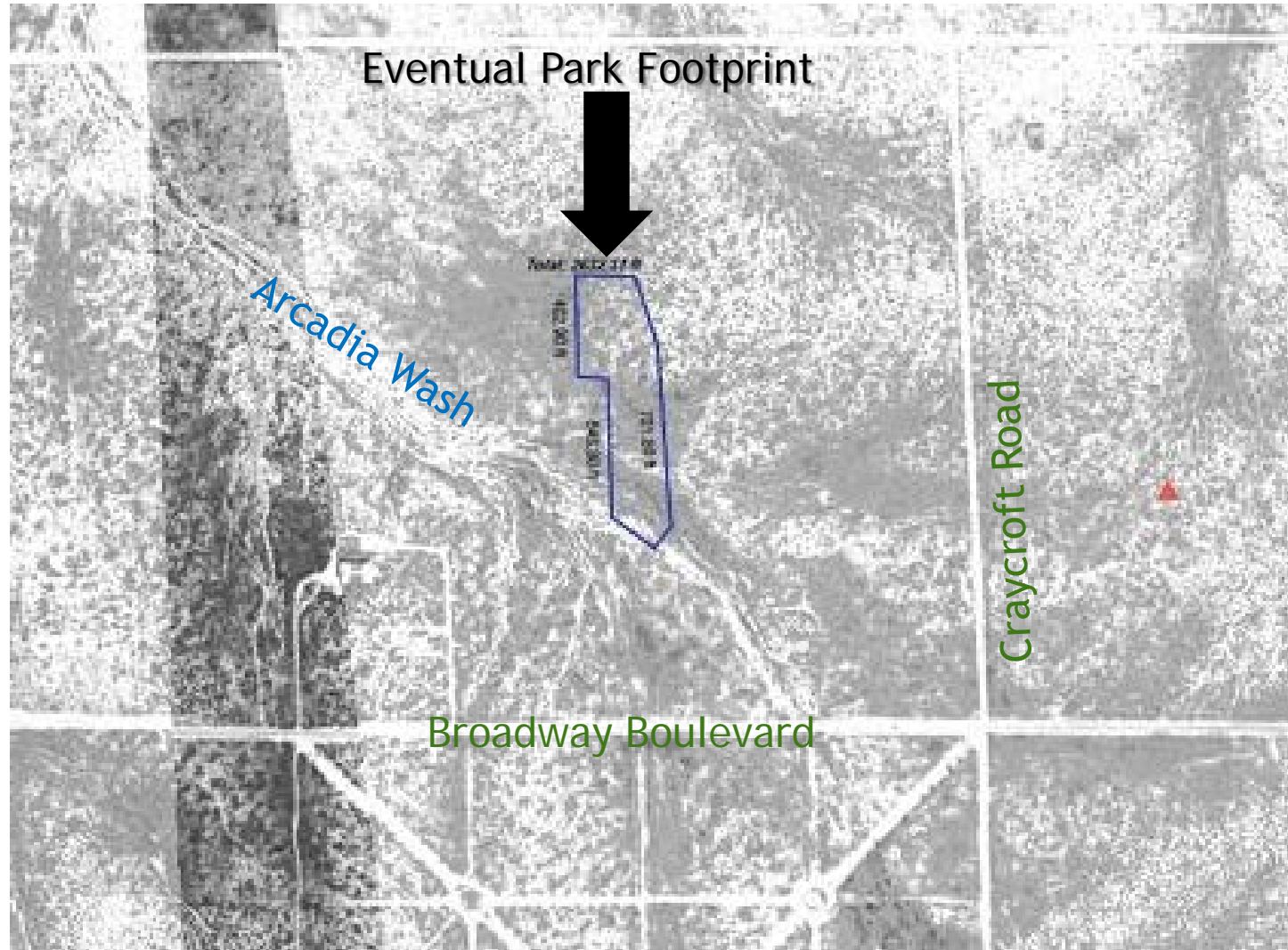
HIGHLAND VISTA NEIGHBORHOOD AND PARK

- ▶ Located in Central Tucson
- ▶ Bounded by Broadway, Craycroft, E. 5th Street and Rosemont
- ▶ Initially developed in mid-1950's
- ▶ Housing emphasized use of adobe brick with open design
- ▶ Neighborhood Park on North bank of Arcadia Wash

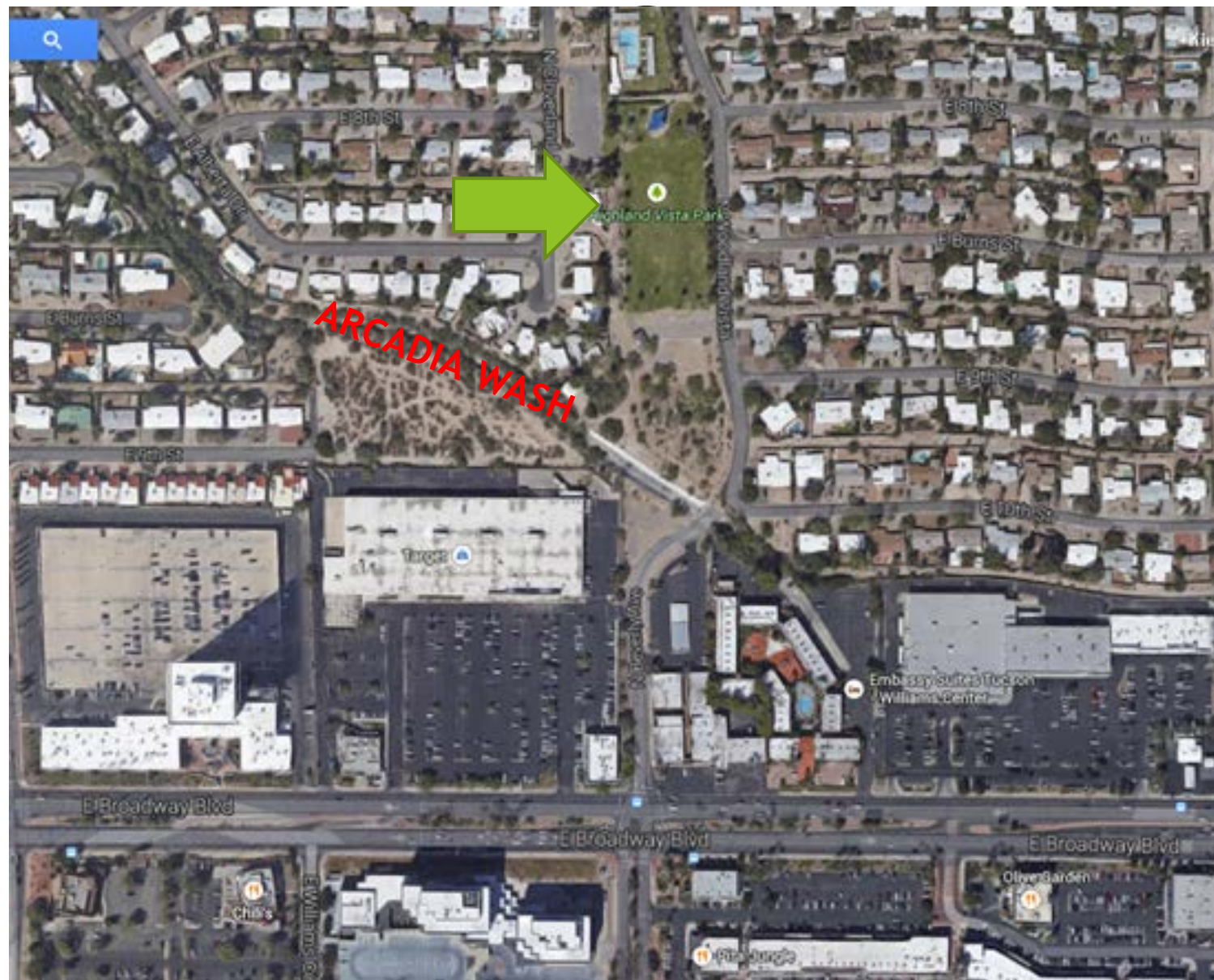


Highland Vista Watershed

Highland Vista- pre-development 1941



Highland Vista Park Today



Infrastructure /

Community

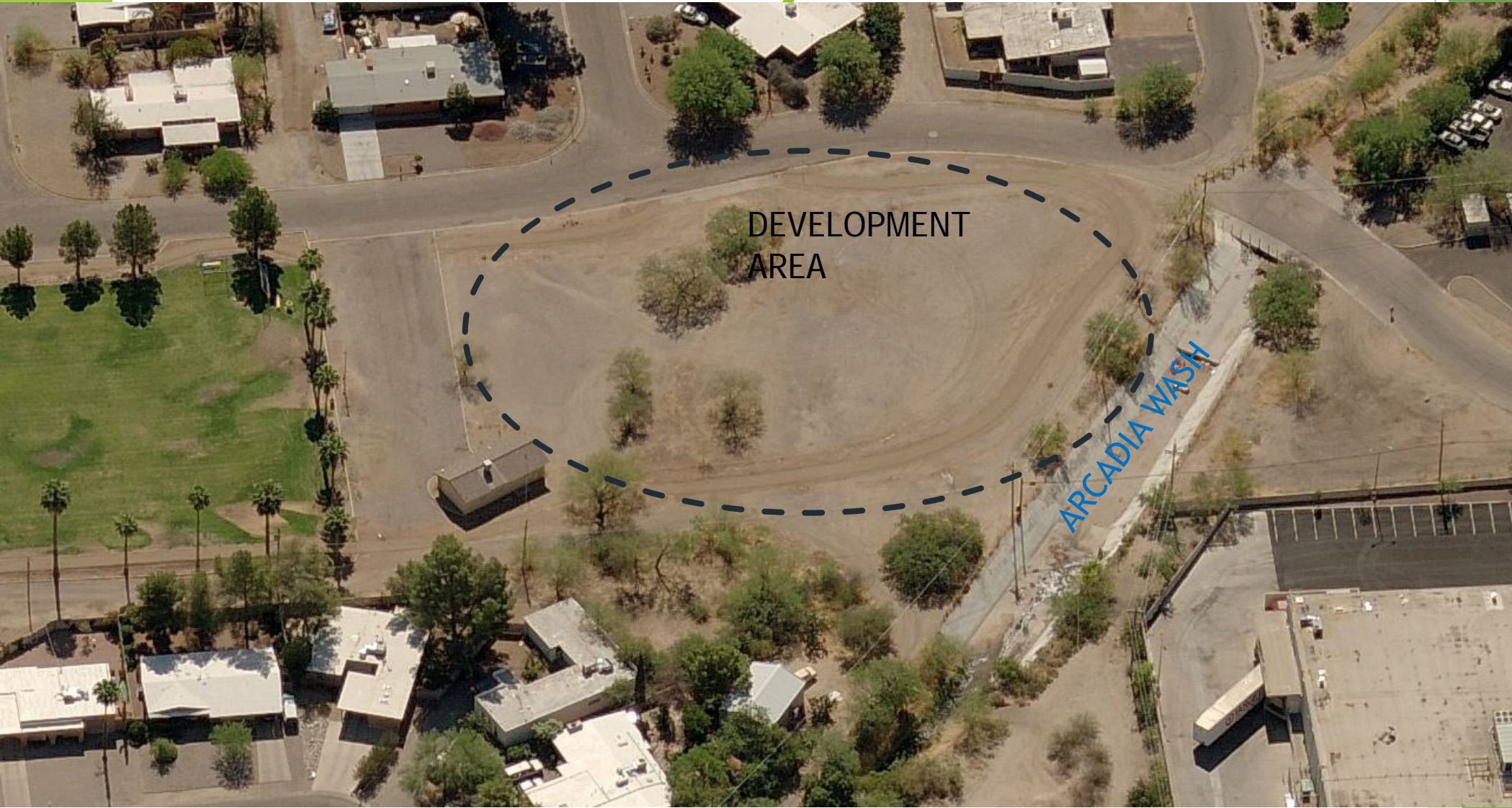
- ▶ Initial:
- ▶ Community Park
- ▶ Swimming Pool
- ▶ Playground
- ▶ Picnic Tables
- ▶ Athletic Field
- ▶ Office for 20-30 Club
(supports youth programs)

- ▶ Neighborhood 346 households
- ▶ Each household is stockholder
in neighborhood pool
- ▶ Swim Team
- ▶ Youth Soccer Team
- ▶ Community Gatherings:
 - ▶ Memorial Day, Independence
Day, Labor Day+ special parties
 - ▶ Rummage sales, movie nights
 - ▶ Bar-B-Q's

Community added Infrastructure

- ▶ **Shade Structure over playground** (with Tucson Parks Foundation)
- ▶ **Walking Path** (with City of Tucson, Ward 6, Back to Basics Grant)
- ▶ **Initial harvesting of street water for Native Plant Oasis** (With Pima County Neighborhood Reinvestment Program, City (Tucson) Parks and Recreation, plus Brad Lancaster, Consultant Designer & Wheat Sharf Architects) **2008**
- ▶ **Little Free Library** (neighbors)
- ▶ **Neighborhood Community Garden Plots** (with Community Gardens of Tucson)
- ▶ **Neighborhood Watch Programs** (with City of Tucson Police)
- ▶ **Adopt-A-Wash Program** (with Tucson Clean and Beautiful)
- ▶ **Proposed: Broadening use of water harvesting for Native Plants, increased retention, reduced flooding, additional decrease in runoff to Arcadia Wash** (with Conserve 2 Enhance Program)

Pre-Project - 2006



Water Harvesting Project Development

WATER HARVESTING GOALS & HOW THEY PERTAIN TO HV PARK

- ▶ Taking a problem and making it an asset
- ▶ Problematic stormwater drainage situation = opportunity for aesthetic improvement and interest
- ▶ Reduce erosion, runoff and sedimentation downstream
- ▶ Direct water where it will do the most good
- ▶ Enhance existing, groundcover areas
- ▶ Provide the local Highland Vista Neighborhood educational opportunities
- ▶ Eliminate standing water to reduce mosquito pressure
- ▶ Reduce pollutants flowing into the washes

Project-Under Constuction-2008



Native Plant Oasis- 2010



Current Project Site -2014

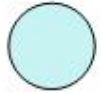


Planned Expansion of Oasis

2016



Native Shade Tree



Mulched Water Harvesting Basin

Distance to wash



END/FIN

James J. Riley*, Associate Professor, Retired
Soil, Water and Environmental Science Department
The University of Arizona
jrjayjay2@gmail.com

*Resident of HV and Board Member